



Tilburg University, The Netherlands

# INTERNATIONAL PROGRAMS 2021/2022



[www.tilburguniversity.edu](http://www.tilburguniversity.edu)

# Welcome to Tilburg University!

Choosing a university and study program is both important and exciting. What are you passionate about? And what are your career aspirations? There are many factors to consider and it is well worth investigating your options as early as possible.

Tilburg University is a research university based in the south of the Netherlands. It is known for its high-quality education, social orientation, and strong campus feeling. We offer a large number of English-taught Bachelor's, Master's, and Research Master's programs in the areas of:

- Economics, Management & Business
- Law & Public Administration
- Social & Behavioral Sciences
- Data Science & Artificial Intelligence
- Communication & Digital Sciences
- Finance & Accountancy
- Humanities & Theology

## Understanding Society

At Tilburg University, our mission is to inspire students to contribute to the development of a better, fairer, and more sustainable society.

Our educational programs instill broad social awareness and stimulate critical personal and professional skills. Our professors and students work on solutions and innovations for complex issues every day. They address issues related to the aging population and healthcare, to working towards a resilient society able to deal with the impact of financial crises, political differences, climate change, new technologies, and to the responsible use of big data. These issues often involve multiple disciplines. We also invite other knowledge institutions, companies, (local) governments, and citizens to work together with us. In that way, new insights develop and valuable answers are found. We call this Social Innovation.

Given that presently our daily lives are affected by the Coronavirus, we continuously seek measures to ensure Social Innovation while providing and guaranteeing qualitative education to our students online. For current information on how Tilburg University is addressing the Coronavirus, we would like to refer you to [www.tilburguniversity.edu/corona](http://www.tilburguniversity.edu/corona)

## Tilburg, a real student city!

1 in 7 people in Tilburg is a student, so student life has an important impact on what happens in Tilburg. The city has something to offer for everyone: a thriving cafe and restaurant culture, sports, art films, world-class pop music and classical music, and great contemporary art. Combined with numerous events, exhibitions, and conferences, you will enjoy an exciting student life.

With a population of more than 217,000, Tilburg is the seventh largest city in the Netherlands. It is conveniently located with just a short train ride to cities like Amsterdam, The Hague, Rotterdam, and easy access to European capitals like Brussels, Paris, and London. The economic environment in the southern part of the Netherlands is innovative and fast-growing. This offers opportunities for internships at international companies located in and around Tilburg.



If you choose to study at Tilburg University, you choose a world-class university on a lively campus that offers cutting-edge research and teaching.

## 5 reasons why you should consider studying in the Netherlands

### #1 International and open-minded

The Netherlands has traditionally been an internationally oriented nation, known for its open-mindedness. The country also ranks #1 worldwide on English proficiency as a non-native language (EF English Proficiency Index 2019). So you can get around perfectly without speaking any Dutch.

### #2 Many opportunities for an international career

Some of the biggest multinationals, including Philips, Heineken, KLM, Shell, ING, and Unilever, are Dutch. Given that it is the 17th largest economy in the world (despite its size ...), there are plenty of opportunities to stay for your career. This is one of the reasons that over 100,000 international students choose to study in the Netherlands annually, so 1 in 10 students in the Netherlands is an international student!

### #3 Live in one of the safest, happiest, and healthiest countries

The Netherlands is one of the safest countries in the world (Global Peace Index 2020) while ranking in the top 6 of the happiest countries worldwide (World Happiness Report 2020), yet being one of the healthiest countries (#15 of 169, Bloomberg Global Health Index 2020).

### #4 Quality of education

Higher education in the Netherlands has a worldwide reputation for its strong quality. All Dutch research universities belong in the top 250 in the world (THE, 2020). All Bachelor's and Master's programs are accredited (i.e. officially recognized) by the Accreditation Organization of the Netherlands and Flanders (NVAO).

### #5 Innovative and interactive

Dutch people enjoy innovation and working on original ideas. This is demonstrated by the fact that we rank #5 in the world on the Global Innovation Index 2020, outpacing countries like the US, the UK, and Germany. The Netherlands also fosters a culture of interaction. This is certainly true in the classroom, where you will interact and work with other students and your lecturers in an open and informal environment.



# Why study at Tilburg University?

The educational profile of Tilburg University is built on three pillars:



**Knowledge**



**Skills**



**Character**

Besides in-depth academic knowledge and professional expertise, a great deal of attention is paid to the development of skills and (moral) character. As a student, you are continuously encouraged to come up with creative ideas and to think beyond conventional solutions and methodologies. In-class discussions and group work keep you actively engaged and involved. You will be educated to become a thinker who dares to act and actively contributes to society. **Hence our motto: Understanding Society.**

**9,557**  
Bachelor's students

**2,047**  
Pre-Master's students

**5,774**  
Master's students

**706**  
PhD Students  
44% international

**17,000+**  
students

**100+**  
nationalities

**30%**  
international students in our English-taught programs

## Dynamic and green campus

Tilburg University has a green campus that is located on the edge of a forest. The campus itself is bustling with student activity and offers a great place for students and lecturers to form a close-knit international community.

## Travel the world

Spend a semester abroad at one of our 200+ partner universities all over the world. You will strengthen your resume, while developing strong intercultural skills in preparation for an international career.

## Challenge yourself

For students who feel ready to take on challenges above and beyond their regular course of study, there are a number of interesting possibilities such as honors and leadership programs, courses in Entrepreneurship and extended Masters.

## Top quality in Business and Economics

Tilburg University ranks #4 in Europe and #17 worldwide in Business & Economics in the US News Best Global Universities Ranking 2020.

## Improve your language skills

Would you like to learn a new language? German, Spanish, or Russian perhaps? At Tilburg University, every student receives 2 free vouchers to use at our Language Center.

## Mind Labs

A combination of technology and behavioral sciences expertise giving our students and staff great opportunities for innovative teaching and research.

- Virtual and Mixed Reality Lab
- Serious Games and Education Lab
- Natural Language and Data Technologies Lab
- Robotics & Avatars Lab

## Top 100!

In the QS World University Rankings by Subject 2020, we rank in the Top 100 for the following subjects:

- Economics & Econometrics
- Accounting & Finance
- Law & Legal Studies
- Business & Management
- Psychology

## Do an internship

All Bachelor's programs have a mobility window in the 3rd year which allows you to do a Minor, go on exchange, or do an internship.

## Excellent facilities

Tilburg University has all the modern facilities you need within walking distance. Study at our in- and outdoor workstations, work out at our top-notch Sports Center, or enjoy a break at one of our many restaurants and cafés, including a Starbucks!

## Join a study or student association

Tilburg University has numerous study and student associations. They offer networking, fun, and social contacts and can truly enrich your student life.

## Healthy campus

Tilburg University is a smoke-free campus to further promote the UN Sustainability Goal and our strategic theme of 'Enhancing Health & Wellbeing'.

TOWARDS A  
**SMOKEFREE  
GENERATION**

# Program Portfolio



	BACHELOR	MASTER		
	Bachelor's programs	Master's programs	Multiple Degree Master's programs	Research Master's programs
Duration	3 years	1 year	1.5-2 years	2 years
Language	English	English	English	English
Start	Sept	Sept/Feb	Sept/Feb	Sept
ECTS	180	60	120	120
Title	BSc/BA/LLB	MSc/MA/LLM	2 or 3 MSc/MA/LLM (from different institutions)	MSc/MA
Focus	Academic foundation	Academic specialization	Combine 1 or more degrees (from different institutions)	Preparation for a PhD

## PhD programs

### Duration: 3 to 5 years

After you have completed a (Research) Master's program, there are several ways to obtain a PhD degree:

- as a PhD student employed by Tilburg University for a period of three or four years,
- as an external PhD student,
- as a PhD student with a grant or
- as a dual PhD partially employed by Tilburg University and partially by a third party (e.g. a company or government agency.)

[www.tilburguniversity.edu/phd](http://www.tilburguniversity.edu/phd)

## International Foundation Year – Pre-Bachelor

If you are not directly eligible for admission to our Bachelor's programs you can apply for an International Foundation Year at the Holland International Study Centre. This pathway program helps you bridge the educational gap by developing your academic and English language skills. Upon successful completion, you can progress to a Bachelor's program at Tilburg University.

Find more information on the Holland International Study Centre website: [www.hollandisc.com/university-partners/tilburg-university](http://www.hollandisc.com/university-partners/tilburg-university)

## Pre-Master's

We offer Pre-Master's for research university students and students from a Dutch University of Applied Sciences (HBO) in a Master's program who are not directly eligible to enroll.

Find more information on our website:

[www.tilburguniversity.edu/education/masters-programmes/premasters](http://www.tilburguniversity.edu/education/masters-programmes/premasters)

## Good to know: What is a research university?

Higher education in the Netherlands is offered at two types of institutions:

- Research universities (13 in the Netherlands, among which Tilburg University)
- Universities of applied sciences (37 in the Netherlands)

Research universities offer the highest level of education available and are a good investment in your career: the total long-term annual income of research-university graduates in the Netherlands is nearly 50% higher than that of graduates of a university of applied sciences. Education at a research university is more theoretical and at an academic level, whereas education at a university of applied sciences is more practice-oriented.

[www.tilburguniversity.edu/dutch-higher-education](http://www.tilburguniversity.edu/dutch-higher-education)

*"The campus was my favorite part about Tilburg University. The international atmosphere and mix of education and social life made it a perfect home away from home."*

Amiel Baluch - Saudi Arabia  
Alumnus MSc Marketing Management

# OUR BACHELOR'S PROGRAMS

	EU Tuition fee per year (approx.)	Non-EU Tuition fee per year (approx.)	Application deadline
<b>Economics &amp; Management</b>			
<b>BSc International Business Administration</b> An excellent foundation for students who want to pursue a career in an international business environment. Covers the four core business topics: marketing, management, finance, and accounting.	€ 2,168	€ 8,900	1 May
<b>BSc Economics</b> Top-rated economics program, aimed at understanding, analyzing, and forecasting economic behavior and global economic changes, and their implications for the performance of organizations.	€ 2,168	€ 8,900	1 May
<b>BSc Econometrics and Operations Research</b> Use mathematics and statistics to optimize complex processes and apply your analytical skills to economic and societal challenges, such as insurance, risk and asset pricing, or supply chain design.	€ 2,168	€ 8,900	1 May
<b>BSc Entrepreneurship and Business Innovation</b> An innovative Bachelor's program in which you develop the knowledge, skills, and expertise to have an impact, either by starting new enterprises or driving innovation within existing organizations.	€ 2,168	€ 8,900	1 May
<b>Social &amp; Behavioral Sciences</b>			
<b>BSc Global Management of Social Issues</b> Understand and manage international societal challenges like unemployment rates or global warming by combining insights from human resource studies, organization studies, and sociology.	€ 2,168	€ 8,900	1 May
<b>BSc Psychology*</b> Study human behavior and its influencing factors, and specialize in one of the nine areas of your choice in psychology. Design your own study program by combining a major and a minor that fit your academic interests and career aspirations.	€ 2,168	€ 8,900	15 Jan
<b>BSc International Sociology</b> Study the relationship between individuals, groups and society, learn to understand social problems, and specialize in the analysis of social phenomena in the modern world.	€ 2,168	€ 8,900	1 May
<b>BSc Human Resource Studies: People Management</b> Study the management of people at work by combining insights from psychology, management studies, sociology, and economics.	€ 2,168	€ 8,900	1 May
<b>Law</b>			
<b>LLB Global Law**</b> This unique transnational program, in which the major legal systems in the world are studied, prepares you for a legal career in a setting where multiple legal systems come together.	€ 2,168	€ 10,700	1 May
<b>Data Science &amp; Artificial Intelligence</b>			
<b>BSc Cognitive Science and Artificial Intelligence</b> Gain insight into the way intelligent systems operate and how this is connected to the workings of the human brain. Develop programming, computational modelling and machine learning skills and learn how to apply these to solve real-world problems.	€ 2,168	€ 8,900	1 May
<b>BSc Data Science</b> This multidisciplinary program teaches students how to analyze and provide insight into the large amounts of data that today's society operates on, and how to incorporate data science in social and economic phenomena. This program is offered jointly with Eindhoven University of Technology.	€ 2,168	€ TBA	1 May

\* This is a numerus fixus program. There is a limited number of places available and there will be a selection process.

More information on: [www.tilburguniversity.edu/students/administration/registration/clausus](http://www.tilburguniversity.edu/students/administration/registration/clausus)

\*\* The institutional fee of € 14,700 is lowered to € 10,700 by a tuition fee waiver

All fees shown are an indication. The exact fees for 2021-2022 will be determined in the start of 2021 and will then be available online at [www.tilburguniversity.edu/tuitionfees](http://www.tilburguniversity.edu/tuitionfees)



## Culture

### BA Online Culture: Art, Media and Society

Study how digitalization and globalization influence our way of living. Discuss new ways of communication, art expressions and (social) media expressions and research how they influence a society that increasingly takes place online.

## University College Tilburg

### BA/BSc Liberal Arts and Sciences

An international program which combines a broad and interdisciplinary education in the liberal arts and sciences with a specialized qualification in one of five majors: Business and Economics, Law in an International Context, Social Sciences, Arts and Humanities, or Cognitive Neuroscience.

## Theology

### BA Theology

Learn about the Christian faith in past and present and study religious studies, sociology, psychology, philosophy, and history. Study the Bible in its original languages and learn to think critically about faith, people, and society. *This Bachelor's program can be taken part-time.*

	EU Tuition fee per year (approx.)	Non-EU Tuition fee per year (approx.)	Application deadline
<b>BA Online Culture: Art, Media and Society</b>	€ 2,168	€ 8,900	1 May
<b>BA/BSc Liberal Arts and Sciences</b>	€ 2,168	€ 8,900	1 May
<b>BA Theology</b>	€ 2,168	€ 2,168	1 May

## IMPORTANT NOTE:

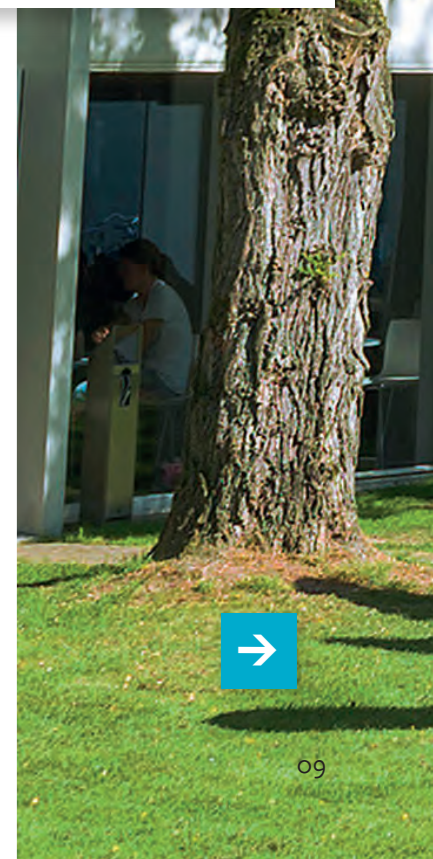
The Dutch government reduces the tuition fee for first-year Bachelor's EU/EEA students by 50%.

You may be eligible for this reduced fee if you meet both of the following criteria:

- You are eligible for the statutory (EU/EEA) fee
- You are entering Dutch higher education for the first time.

For more information go to [www.tilburguniversity.edu/tuitionfees](http://www.tilburguniversity.edu/tuitionfees)

[www.tilburguniversity.edu/bachelors](http://www.tilburguniversity.edu/bachelors)



# OUR MASTER'S PROGRAMS including Tracks

	Duration	Start date(s)	EU Application deadline	Tuition fee per year (approx.)	Non-EU Application deadline	Tuition fee per year (approx.)
<b>Communication, Digital Sciences, Culture &amp; Philosophy</b>						
MSc Business Communication and Digital Media **	1 year	Sep/Feb	1 July / 1 Dec	€ 2,168	1 April / 1 Oct	€ 14,700
MSc New Media Design **	1 year	Sep/Feb	1 July / 1 Dec	€ 2,168	1 April / 1 Oct	€ 14,700
MSc Communication and Cognition **	1 year	Sep/Feb	1 July / 1 Dec	€ 2,168	1 April / 1 Oct	€ 14,700
MSc Communication and Information Sciences	1 year	Sep/Feb	1 July / 1 Dec	€ 2,168	1 April / 1 Oct	€ 14,700
MA Health Humanities **	1 year	Sep	1 July	€ 2,168	1 April	€ 14,700
MA Management of Cultural Diversity **	1 year	Sep	1 July	€ 2,168	1 April	€ 14,700
MA Art and Media Studies **	1 year	Sep	1 July	€ 2,168	1 April	€ 14,700
MA Digital Culture Studies **	1 year	Sep	1 July	€ 2,168	1 April	€ 14,700
MA Philosophy of Humanity and Culture **	1 year	Sep/Feb	1 July / 1 Dec	€ 2,168	1 April / 1 Oct	€ 14,700
MA Philosophy of Contemporary Challenges **	1 year	Sep/Feb	1 July / 1 Dec	€ 2,168	1 April / 1 Oct	€ 14,700
MA Philosophy of Mind and Psychology **	1 year	Sep/Feb	1 July / 1 Dec	€ 2,168	1 April / 1 Oct	€ 14,700
<small>This is a new track that will begin in September 2021</small>						
MA Research Master in Linguistics and Communication Sciences *	2 years	Sep/Feb	1 July / 1 Dec	€ 2,168	1 April / 1 Oct	€ 2,168
<b>Data Science &amp; Artificial Intelligence</b>						
MSc Business Analytics and Operations Research	1 year	Sep/Feb	1 July / 1 Dec	€ 2,168	1 April / 1 Oct	€ 14,700
MSc Cognitive Science and Artificial Intelligence	2 years	Sep	1 July	€ 2,168	1 April	€ 14,700
MSc Data Science and Entrepreneurship	2 years	Sep	1 July	€ 2,168	1 April	€ TBA
<small>offered jointly with Eindhoven University of Technology</small>						
MSc Data Science and Society	1 year	Sep/Feb	1 July / 1 Dec	€ 2,168	1 April / 1 Oct	€ TBA
<small>Tracks: Health / Media / Business / Governance</small>						
<b>Economics &amp; Management</b>						
MSc Accountancy	1 year	Sep/Feb	1 July / 1 Dec	€ 2,168	1 April / 1 Oct	€ 14,700
MSc Business Analytics and Operations Research	1 year	Sep/Feb	1 July / 1 Dec	€ 2,168	1 April / 1 Oct	€ 14,700
MSc Econometrics and Mathematical Economics	1 year	Sep/Feb	1 July / 1 Dec	€ 2,168	1 April / 1 Oct	€ 14,700
MSc Economics	1 year	Sep/Feb	1 July / 1 Dec	€ 2,168	1 April / 1 Oct	€ 14,700
<small>Tracks: Law and Economics / Public Policy / Sustainable Development / Data Science / Financial Economics / Behavioral Economics</small>						
MSc Finance	1 year	Sep	1 July	€ 2,168	1 April	€ 14,700
<small>Track: Chartered Financial Analyst (CFA)</small>						
MSc Information Management	1 year	Sep/Feb	1 July / 1 Dec	€ 2,168	1 April / 1 Oct	€ 14,700
MSc International Business Tax Economics	1 year	Sep	1 July	€ 2,168	1 April	€ 14,700
MSc International Management	1 year	Sep/Feb	1 July / 1 Dec	€ 2,168	1 April / 1 Oct	€ 14,700
MSc Marketing Management	1 year	Sep/Feb	1 July / 1 Dec	€ 2,168	1 April / 1 Oct	€ 14,700
MSc Marketing Analytics	1 year	Sep/Feb	1 July / 1 Dec	€ 2,168	1 April / 1 Oct	€ 14,700
MSc Quantitative Finance and Actuarial Science	1 year	Sep/Feb	1 July / 1 Dec	€ 2,168	1 April / 1 Oct	€ 14,700
MSc Strategic Management	1 year	Sep	1 July	€ 2,168	1 April	€ 14,700
<small>Track: Consultancy</small>						
<small>Track: Entrepreneurship</small>						
MSc Supply Chain Management	1 year	Sep/Feb	1 July / 1 Dec	€ 2,168	1 April / 1 Oct	€ 14,700
MSc Research Master in Business *	2 years	Sep	1 Feb / 1 April	€ 2,168	1 Feb / 1 April	€ 2,168
<small>Tracks: Accounting / Finance / Marketing / Operations Research / Management - Organization and Strategy / Management - Information and Supply Chain</small>						
MSc Research Master in Economics *	2 years	Sep	1 Feb / 1 April	€ 2,168	1 Feb / 1 April	€ 2,168

At Tilburg School of Economics and Management we offer additional opportunities for ambitious students. You can enrich your experience by following an Extended Master, by pursuing an International Double Degree or by participating in the prestigious QTEM program. Please visit the program websites for more information.

	Duration	Start date(s)	EU Application deadline	Tuition fee per year (approx.)	Non-EU Application deadline	Tuition fee per year (approx.)
<b>Law &amp; Public Administration</b>						
LLM European Law and Global Risk **	1 year	Sep/Feb	1 July / 1 Dec	€ 2,168	1 April / 1 Oct	€ 14,700
LLM International Business Law	1 year	Sep	1 July	€ 2,168	1 April	€ 14,700
LLM International Business Tax Law **	1 year	Sep	1 July	€ 2,168	1 April	€ 14,700
LLM International Law and Global Governance **	1 year	Sep/Feb	1 July / 1 Dec	€ 2,168	1 April / 1 Oct	€ 14,700
LLM Labour Law and Employment Relations	1 year	Sep/Feb	1 July / 1 Dec	€ 2,168	1 April / 1 Oct	€ 14,700
LLM Law and Technology	1 year	Sep/Feb	1 July / 1 Dec	€ 2,168	1 April / 1 Oct	€ 14,700
MSc Public Governance: Public Administration, Economics and Law	1 year	Sep	1 July	€ 2,168	1 April	€ 14,700
<b>Social &amp; Behavioral Sciences</b>						
MSc Cognitive Neuropsychology**	1 year	Sep	1 July	€ 2,168	1 April	€ 14,700
MSc Economic Psychology**	1 year	Sep	1 July	€ 2,168	1 April	€ 14,700
MSc Health, Wellbeing and Society**	1 year	Sep/ Feb	1 July/ 1 Dec	€ 2,168	1 April/ 1 Oct	€ 14,700
MSc Human Resource Studies	1 year	Sep/ Feb	1 July/ 1 Dec	€ 2,168	1 April/ 1 Oct	€ 14,700
MSc Organization Studies	1 year	Sep	1 July	€ 2,168	1 April	€ 14,700
MSc Organizing for Global Social Challenges**	1 year	Sep	1 July	€ 2,168	1 April	€ 14,700
MSc People Management for Global Social Challenges**	1 year	Sep	1 July	€ 2,168	1 April	€ 14,700
MSc Politics, Policy and Societal Development**	1 year	Sep	1 July	€ 2,168	1 April	€ 14,700
MSc Positive Psychology and Well-being**	1 year	Sep	1 July	€ 2,168	1 April	€ 14,700
MSc Sociology	1 year	Sep/ Feb	1 July/ 1 Dec	€ 2,168	1 April/ 1 Oct	€ 14,700
MSc Work and Organizational Psychology**	1 year	Sep	1 July	€ 2,168	1 April	€ 14,700
MSc Research Master in Psychology*: Individual Differences and Assessment	2 years	Sep	1 July	€ 2,168	1 April	€ 2,186
MSc Research Master in Social and Behavioral Sciences* <small>Tracks: Sociology / Social Psychology / Organization Studies / Methods and Statistics</small>	2 years	Sep	1 July	€ 2,168	1 April	€ 2,186
<b>Theology</b>						
MA Christianity and Society <small>Extended Master available. This Master's program can be taken part-time.</small>	1 year	Sep	1 July	€ 2,168	1 April	€ 5,300

\* The institutional fee of €14,700 is lowered to €2,168 by a tuition fee waiver.  
\*\* Independent specialization/track as part of an accredited program

## IMPORTANT NOTE:

- All fees shown are an indication. The exact fees for 2021-2022 will be determined in the start of 2021 and will then be available at [www.tilburguniversity.edu/tuitionfees](http://www.tilburguniversity.edu/tuitionfees)
- The fees in this table are the standard fees. Other fees apply in specific situations, e.g., for students who have already obtained a degree at a Dutch university or for students who start in Spring (February intake)

[www.tilburguniversity.edu/masters](http://www.tilburguniversity.edu/masters)

## Challenge yourself, extend your degree!

In many of our programs in the field of social and behavioral sciences, economics and business, and humanities, you will have the opportunity to complete part of your degree abroad with one of our partner universities around the world. This can be through a double degree, multiple degree, or extended master.

To learn more about the double and/or multiple degree options you can visit the web page of the program of your choice to know whether it offers such options. Please note, that some multiple degrees offered may not grant you the possibility to opt-in or out, thus, you would then be required to pursue the multiple degree.

# Application & admission



## Bachelor's programs admission requirements

### Diploma requirements

Tilburg University accepts a range of secondary school diploma's from across the globe. A few of the diploma's we recognize are listed here; for a full overview, please have a look at our website.

- A Dutch VWO diploma
- An International or European Baccalaureate (IB/EB)
- A European secondary school diploma which allows access to university in your own country, such as the German Abitur, the Swiss Matura, the French Baccalauréat or British A-levels.

If your secondary school diploma does not entirely meet the requirements of the program of your choice, you might be required to complete an additional year at another university before you can start at Tilburg University. For some programs, we offer a foundation year.

### English language proficiency

You need to demonstrate your proficiency in English by submitting the results of either:

- Academic IELTS: minimum score of 6.0 (5.5 min. for all parts)
- TOEFL Internet-based: minimum of 80
- Cambridge:
  - C1 advanced (formerly CAE): score A, B or C
  - C2 proficiency (formerly CPE): score A, B or C
- By submitting your IB or EB diploma

*Different requirements apply for:*

*BSc Data Science: Academic IELTS – min. 6.5 overall, 6.0 for all parts / TOEFL IBT - min. 90 overall, 21 for all parts.*  
*LLB Global Law: Academic IELTS - min 6.0 overall, 6.0 for all parts*

### Additional requirements

Additional entry requirements apply, depending on the program you are interested in. For example, for a program in the field of economics & management, artificial intelligence or data science, you need to have sufficient knowledge of mathematics. For most of our programs, you will need to take part in an application procedure, which involves writing a motivation letter, and sometimes taking part in an interview or writing an essay.

*For a complete overview of our admission requirements, please visit our website: [www.tilburguniversity.edu/bachelors/admissionrequirements](http://www.tilburguniversity.edu/bachelors/admissionrequirements)*

## Master's programs admission requirements

### Diploma requirements

In general, you are eligible for Tilburg University Master's programs if you have:

- A Bachelor's degree in a relevant discipline for the program of your choice

If your Bachelor's degree does not entirely meet the requirements of the program of your choice, you might be eligible for a pre-Master's program. A pre-Master's program is designed to fill knowledge gaps and provide you with the essential foundation needed to pursue the Master's of your choice.

### English language proficiency

You need to demonstrate your proficiency in English by submitting the results of either:

- Academic IELTS: 6.5 (6.0 min. for all parts)
- TOEFL Internet-based: 90 (22 min. for all parts)
- Cambridge
  - C1 advanced (formerly CAE): score A, B or C
  - C2 proficiency (formerly CPE): score A, B or C

*Different requirements apply for:*

- *Economics & Management programs: TOEFL IBT - min. 22 for all parts.*
- *most Research Master's programs: Academic IELTS - min 7.0 / TOEFL IBT - min. 100.*

### Additional requirements

Programs in the field of Economics require a GRE, with a minimum score of 160 on the quantitative part. Programs in the field of Business require a GMAT, with a minimum score of 550.

Students who finished a degree at a partner university of Tilburg School of Economics and Management with the exception of the MSc International Management will be exempted from taking the GRE / GMAT.

To view our partner list, see [www.tilburguniversity.edu/tisempartners](http://www.tilburguniversity.edu/tisempartners)

*Please visit [www.tilburguniversity.edu/masters](http://www.tilburguniversity.edu/masters) to find out the exact requirements for the program of your choice.*

## Costs

Besides the tuition fees, you will have living costs and other expenses. You will find life in Tilburg relatively inexpensive compared to life in other Dutch university cities, such as Amsterdam and Utrecht. The approximate cost of living is between € 700 and € 1,000 per month.

### Estimated monthly costs of living

(Furnished) accommodation	€ 350 - 700
Food & Drinks	€ 250
Books & Readers	€ 65
Insurance	€ 40



*One of the popular housing options for international students is at TalentSquare*

## Accommodation

Tilburg University does not offer student accommodation itself, but we will help you find a place to live. We work with a number of preferred suppliers for housing who offer fully furnished rooms and apartments specifically for international students. It is also very common to look for housing options via the internet yourself. If you prefer this, we will help you get started with a list of recommended websites at:

[www.tilburguniversity.edu/accommodation](http://www.tilburguniversity.edu/accommodation)

## International student support

We offer a number of excellent support services specifically for prospective international students:

- Personal guidance throughout the application and admissions procedure
- Help in finding accommodation
- Immigration services
- Tilburg Orientation Program for newly arrived students
- Buddy program

## Scholarships

### Non-EEA/EU students

Tilburg University provides a number of scholarships for outstanding international students who have been admitted to a Master's program. On our website you will find a short description and a link to various types of scholarships which can help you finance your studies at Tilburg University. Please note that the number of scholarships are limited and mainly targeted at students with excellent grades.

[www.tilburguniversity.edu/scholarships](http://www.tilburguniversity.edu/scholarships)

### EEA/EU students

Do you hold a passport from the EU or European Economic Area? Please note that a reduced tuition fee rate applies to you. The tuition fee for EU and EEA students is 2,168 euro.

As an EU or EEA student, you also have the opportunity to apply for a loan from the Dutch government to cover the tuition fees. If you meet specific requirements, you can also apply for a loan to cover your living costs, a free public transport card, and a supplementary grant from the Dutch government.

*You can find more information on [www.duo.nl](http://www.duo.nl), click 'International visitor'.*

Also, no additional earnings threshold applies to EU/EEA students, so you can have a paid job next to your studies.

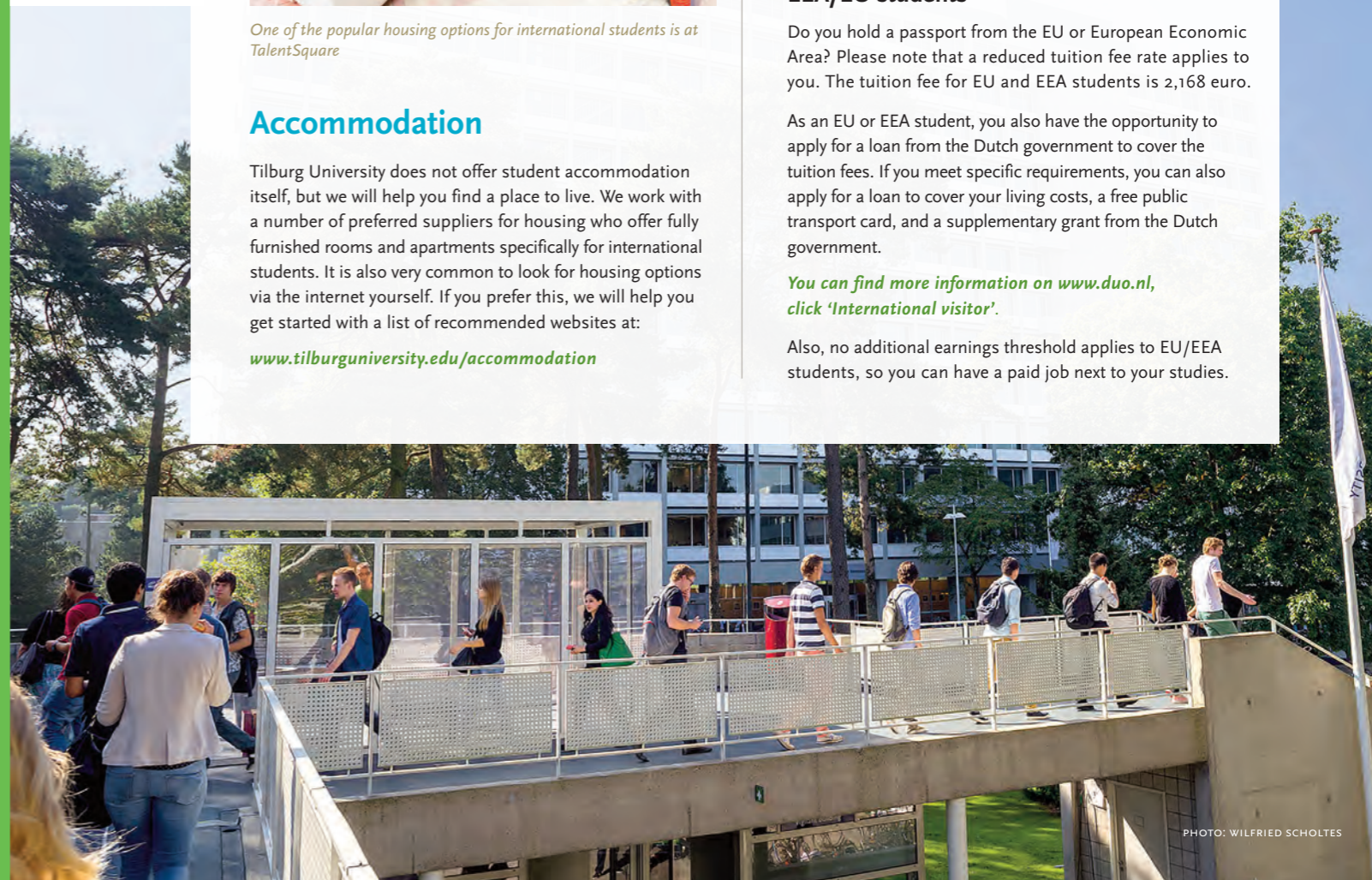


PHOTO: WILFRIED SCHOLTES

# Career Preparation

At Tilburg University, we are dedicated to preparing you for your transition to the labor market. To ensure that you will graduate as a professional, we invest in the development of 21st century skills like debating, presentation skills, digital knowledge, personal development and, creative and innovative thinking. We also encourage all students to participate in extra-curricular activities.

## Student Career Services

Whether you already have a clear picture of your ideal career or still need to plot the right course, our Student Career Services will be happy to help you along. Each of our Schools has a dedicated Career Services Officer who is your first point of contact regarding questions about labor market orientation and career preparation such as:

Finding internships, academic side jobs, board positions, and other activities of interest to your resume. Next to that, there are specialized career coaches and trainers. Jointly they offer a wide range of services:

- You can take part in workshops and training courses
- You can make use of individual career coaching
- You can join career events and meet companies on campus
- You can make use of the drop-in consultation hours for job applications to receive valuable advice and tips for your CV and cover letter
- You can make use of the Mentor Program to get in touch (one-on-one) with experienced alumni to learn about future career options and develop professional and networking skills
- Tilburg University is also eager to support you to learn about entrepreneurship or go into business yourself
- Shortly after graduation, Tilburg University invites you to participate in the Coach Café event which is geared to contacting you to Tilburg University's alumni network.

## Where do our graduates work?

Among the top employers of our graduates are:

- Ernst & Young EY
- KPMG
- Deloitte
- Philips
- Rabobank
- PricewaterhouseCoopers PwC
- ING Bank
- A variety of universities worldwide
- ASML

## Our graduates...



**2,35 months**

average time for a graduate to find a job

**92%**

finds a job within 6 months



**€2,875**

average gross starting salary



**88%**

is satisfied with their Master's program

**85%**

would choose our university again!



300+ connections

**Mariana Atanasova**  
Brand Specialist

Unilever | Rotterdam area

Past experience  
Unilever, Stravagante  
Master's program  
Business Communication and Digital Media

[www.linkedin.com/in/mariana-atanasova-4858a81b](https://www.linkedin.com/in/mariana-atanasova-4858a81b)



500+ connections

**Maria Victoria Rodriguez Resende**  
Banker Analyst

J.P. Morgan | Geneva

Past experience  
Goldman Sachs  
Bachelor's program  
Economics

[www.linkedin.com/in/maria-victoria-rodriguez-resende-81683014b](https://www.linkedin.com/in/maria-victoria-rodriguez-resende-81683014b)



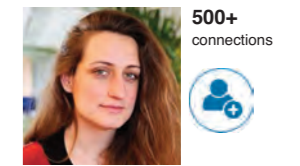
200+ connections

**Tony Koivula**  
Associate

Alder & Sound | Helsinki

Past experience  
Deloitte Malta, Gencs Valters Law firm, PwC  
Master's program  
International Business Tax Law

[www.linkedin.com/in/tony-koivula](https://www.linkedin.com/in/tony-koivula)



500+ connections

**Afroditi Kanakopoulou**  
Marketing Executive

GML Interactive | Greece

Past experience  
OgilvyOne Worldwide, Expressión Media, Startupbootcamp Hightech XL, Aegean Airlines  
Master's program  
Business Communication and Digital Media

[www.linkedin.com/in/afroditkanakopoulou](https://www.linkedin.com/in/afroditkanakopoulou)



500+ connections

**Alexandros Diamantopoulos**  
Finance Business Partner, Group Procurement

Philips | Eindhoven

Past experience  
Eurobank  
Master's program  
• International Master in Management of IT  
• Finance, CFA track

[www.linkedin.com/in/alexandrosdiamantopoulos](https://www.linkedin.com/in/alexandrosdiamantopoulos)



300+ connections

**Hao Liang**  
Assistant professor of Finance

Singapore Management University | Singapore

Past experience  
Tilburg University  
Master's program  
Research Master in Business & PhD in Finance

[www.linkedin.com/in/shemleung](https://www.linkedin.com/in/shemleung)



500+ connections

**Jorge Galindo**  
Public Information Officer

IOM - UN Migration Agency | Nigeria

Past experience  
Lingoda GmbH, Global Forum on Migration and Development, Nuffic Neso Mexico  
Master's program  
Communication and Information Sciences

[www.linkedin.com/in/jorgegalindo87](https://www.linkedin.com/in/jorgegalindo87)



200+ connections

**Namira Puspandari**  
Program Coordinator

Foundation for International Human Rights Reporting Standards (FIHRRST) | Jakarta

Past experience  
Farsight Services, Global Human Rights Defence, AIESEC  
Master's program  
International Law and Human Rights

[www.linkedin.com/in/namirapuspandari](https://www.linkedin.com/in/namirapuspandari)



500+ connections

**Pavlo Bepalov**  
Counsel Ukraine, Caucasus and Moldova

Philip Morris International | Kiev, Ukraine

Past experience  
GlaxoSmithKline, KPMG, Nemiroff, Dr Reddy's Lab  
Master's program  
International Business Law

[www.linkedin.com/in/pavlobespalov](https://www.linkedin.com/in/pavlobespalov)



500+ connections

**Iva Karadzic**  
HR Business Partner Operations

Air Serbia | Belgrade, Serbia

Past experience  
Air Serbia, Etihad Airways  
Master's program  
Human Resource Studies

[www.linkedin.com/in/iva-karadzic](https://www.linkedin.com/in/iva-karadzic)



400+ connections

**Omer Onur Kincilar**  
Market Specialist

Facebook | California Area

Past experience  
Accenture, Ford Otosan, Daimler - Mercedes Benz Türk  
Master's program  
Economics

[www.linkedin.com/in/omer-onur-kincilar-2a200464](https://www.linkedin.com/in/omer-onur-kincilar-2a200464)



200+ connections

**Elena Damian**  
Postdoctoral Researcher

Centre for Sociological Research - KU Leuven | Belgium

Past experience  
University of Cologne, Radboud University  
Master's program  
Research Master Social and Behavioral Sciences

[www.linkedin.com/in/elena-damian](https://www.linkedin.com/in/elena-damian)



FOLLOW US ONLINE



TilburgUniversity

## Interested in knowing more about our upcoming events?

Take a look at our events calendar:

[www.tilburguniversity.edu/education/event-calendar](http://www.tilburguniversity.edu/education/event-calendar)



## Do you want to know more? Create your own personalized brochure!

In a few easy steps, you can create your own customized brochure with a.o. information on program content, admission requirements, career prospects and housing and immigration matters.



[www.tilburguniversity.edu/mybrochure](http://www.tilburguniversity.edu/mybrochure)

